

## Plate calibrator and roller pull-off units for extruder units

For the production of plates and panels made of hard foam, plastic, etc.



### Plate calibrator:

Consisting of an upper and a lower mould plate. These can be adjusted independently of each other (by motor). The angle of the mould plate can be set as desired (by motor).

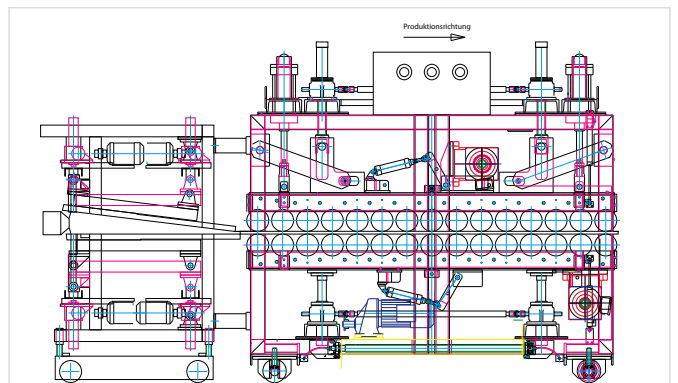
### Roller pull-off:

Consisting of an upper and a lower roller frame, each with 15 rollers. All the rollers, Ø 150 mm, have a special heat-resistant, antistatic rubber coating.

The stroke of the upper roller frame is provided by lifting elements with a three-phase AC geared motor, additional pneumatic lifting off and monitoring of the pressure applied. Upper and lower roller frame with individual three-phase AC drive units and frequency regulation and swing angle comparison.

Pole-changing drive via a threaded spindle.

Solid construction with guaranteed high availability for continuous operation.



### Technical data:

Working width	up to 2,400 mm
Plate and panel thickness	up to 200 mm
Unit speed	up to 60 m/min.
Travelling path	1,000 mm
Drive unit speed	0.5 / 1.0 m/min.
Controller	PLC Siemens S7 – 300
Voltage	depending on the order