



500 E

## Stenter Frame

For stretching, extending and spreading of fabric, fleece, felt, non-woven etc.



### Stenter frame: Construction:

horizontal or vertical

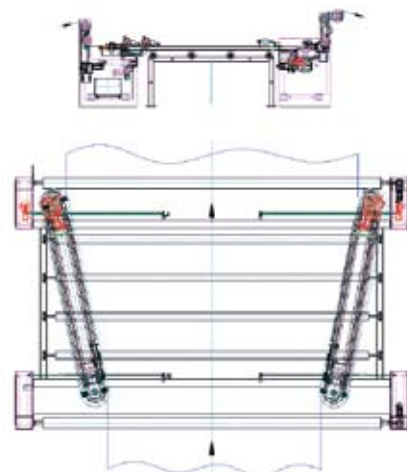
### Stenter frame chain:

needle or stenter hook, as well as combined as needle-stenter hook

The stenter frame chains with individual drives as three-phase-gear motor (frequency controlled)

With the possibility of advance of the chain for levelling of the diagonal draught of the fabric

Example: spreading of needlefleece/needlefelt between two needlemachines in order to even out the fabric contraction after the first needle machine.



### Technical data:

Working width:	up to 7.000 mm
Unit speed:	up to 150 m/min.
Controller:	PLC Siemens S7 – 300
Voltage:	depending on the order